

FOR LEASE



10425 Old Alabama Connector Road Suite 101
Alpharetta, GA. 30022

Excellent Office Location

Call Agent For Additional Leasing Information

♦ Suite 101

Rental Rate:

- ♦ \$7,166.00 per month + CAM
- ♦ CAM: \$498.00 per month

PROPERTY DESCRIPTION:

- ♦ 4,777 +- Square Feet
- ♦ Reception, 1 large conference room, 5 private offices, break room/kitchen, 1 large bull pen area that is approx. 70x29, 1 flex room/6th office.
- ♦ Restrooms - 4 total stalls
- ♦ Plenty of parking
- ♦ New LVP Flooring and paint!
- ♦ Showings by appointment only.

LOCATION:

- Downtown Alpharetta
- Convenient to GA 400 via exit 9



BAGLEY COMMERCIAL PROPERTIES

Doug Sills, Associate Broker
Cell (678) 923-5538
doug@bagleycommercial.com

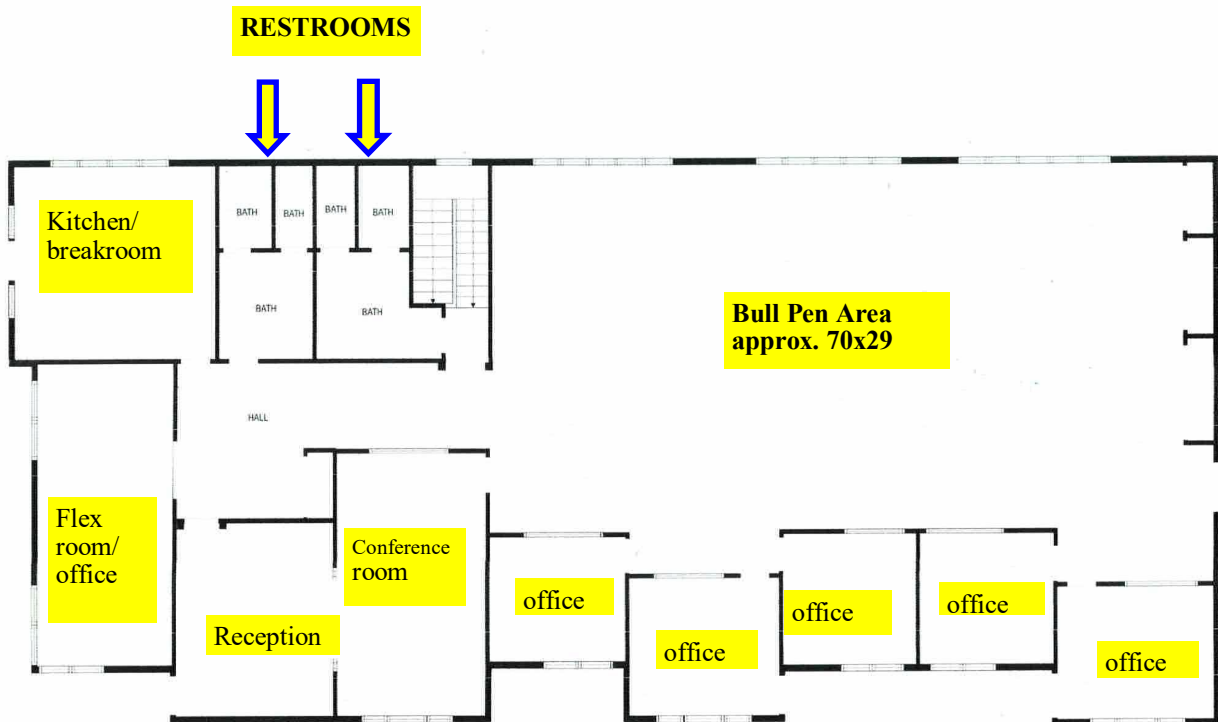
ALL INFORMATION BELIEVED ACCURATE BUT NOT WARRANTED.

104 Pilgrim Village Drive Suite 400 - Cumming, Ga. 30040 - Office: (770) 781-5935 - www.bagleycommercial.com

10425 Old Alabama Connector Road Suite 101
Alpharetta, GA. 30022



Floor Plan - Suite 101



*All measurements are approximate.

*All information believed accurate but not warranted.

FLOOR PLAN CREATED BY CUBICASA APP. MEASUREMENTS DEEMED HIGHLY RELIABLE BUT NOT GUARANTEED.

BAGLEY COMMERCIAL PROPERTIES

Doug Sills, Associate Broker
Cell (678) 923-5538

doug@bagleycommercial.com

ALL INFORMATION BELIEVED ACCURATE BUT NOT WARRANTED.

FOR LEASE

10425 Old Alabama Connector Road Suite 101
Alpharetta, GA. 30022



BAGLEY COMMERCIAL PROPERTIES

Doug Sills, Associate Broker
Cell (678) 923-5538

doug@bagleycommercial.com

ALL INFORMATION BELIEVED ACCURATE BUT NOT WARRANTED.

104 Pilgrim Village Drive Suite 400 - Cumming, Ga. 30040 - Office: (770) 781-5935 - www.bagleycommercial.com

FOR LEASE

10425 Old Alabama Connector Road Suite 101
Alpharetta, GA. 30022



BAGLEY COMMERCIAL PROPERTIES

Doug Sills, Associate Broker
Cell (678) 923-5538
doug@bagleycommercial.com

ALL INFORMATION BELIEVED ACCURATE BUT NOT WARRANTED.

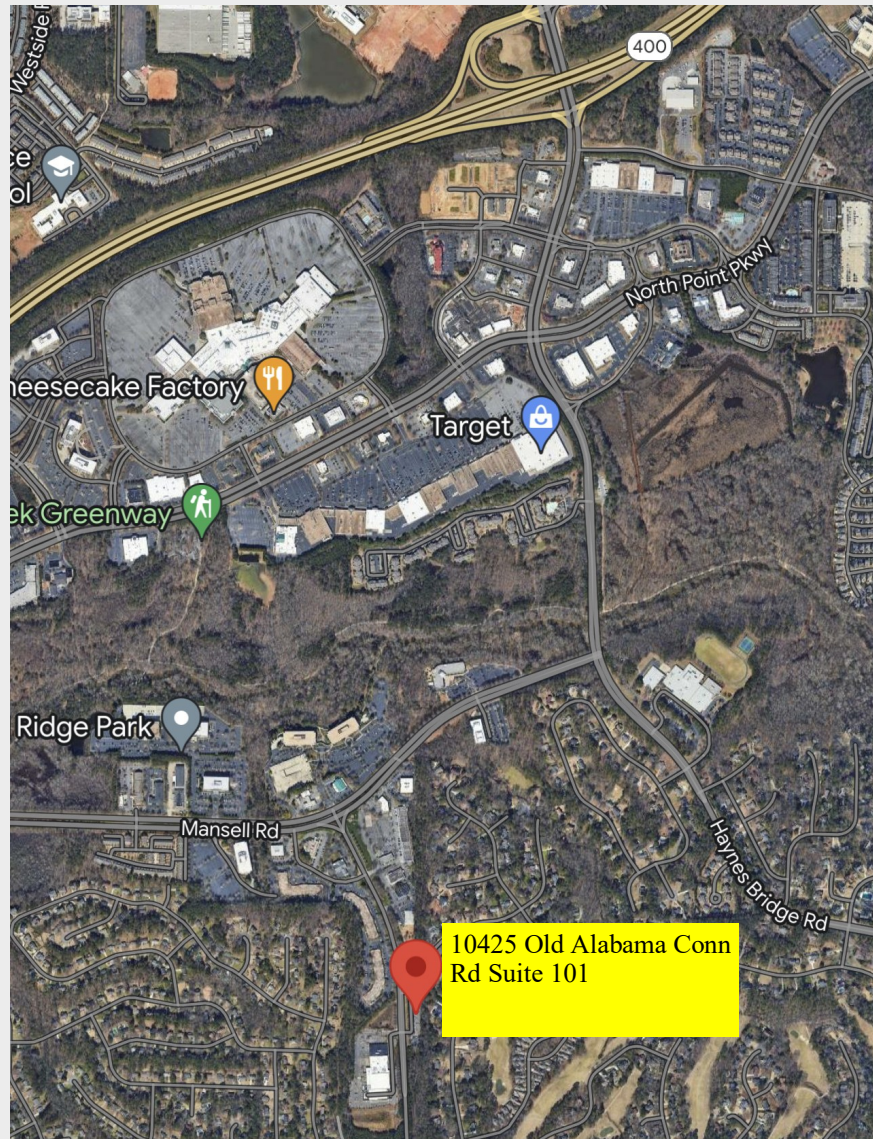
104 Pilgrim Village Drive Suite 400 - Cumming, Ga. 30040 - Office: (770) 781-5935 - www.bagleycommercial.com

BAGLEY COMMERCIAL PROPERTIES

Doug Sills, Associate Broker
(C) (678) 923-5538
doug@bagleycommercial.com



Location Map



Disclaimer: The information included in this packet has been obtained from sources believed to be reliable. While Bagley Commercial Properties does not doubt its accuracy, we do not make any guarantee's, warranties, with regards to the included information. It is your responsibility to independently confirm its accuracy and completeness. References to square footage or age are approximate. You and your advisors should conduct a careful, independent investigation of the property to determine to your satisfaction the suitability of the property for your needs. The information contained in this packet is proprietary and confidential, and should not be distributed to any other potential purchaser without the consent of Bagley Commercial Properties.

104 Pilgrim Village Drive Suite 400 - Cumming, Ga. 30040 - Office: (770) 781-5935 - www.bagleycommercial.com