



FOR LEASE

1830 Peachtree Pkwy Unit 110 Cumming GA 30041


Property Highlights:


- Base Rent: \$1,842.00 per month + CAM
- CAM: \$100.00 per month
- Ground Level End Unit
- ADA Compliant
- 1300 +/- Square Feet
 - Reception
 - 2 offices w/ windows
 - Conference Room/3rd office
 - Kitchen/Break Room
 - Bathroom
- Located in South Forsyth off Hwy 141
- Showings by appointment only




Presented by: Doug Sills, Associate Broker

 Doug@BagleyCommercial.com

 7770.781.5935 (office)

 7770.781.5935 (direct)



 BagleyCommercial.com

**All information believed accurate but not warranted. Tenant responsible for verification.*

www.BagleyCommercial.com

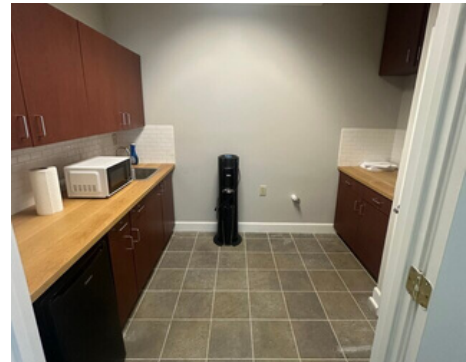
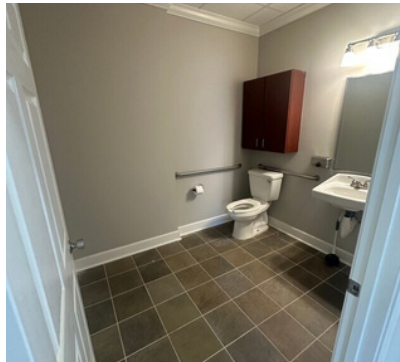


Presented by: Doug Sills
Associate Broker

 7770.781.5935 (office)  678-923-5538 (cell)

 Doug@BagleyCommercial.com

1830 Peachtree Pkwy Unit 110 Cumming GA 30041



**All information believed accurate but not warranted. Tenant responsible for verification.*

www.BagleyCommercial.com



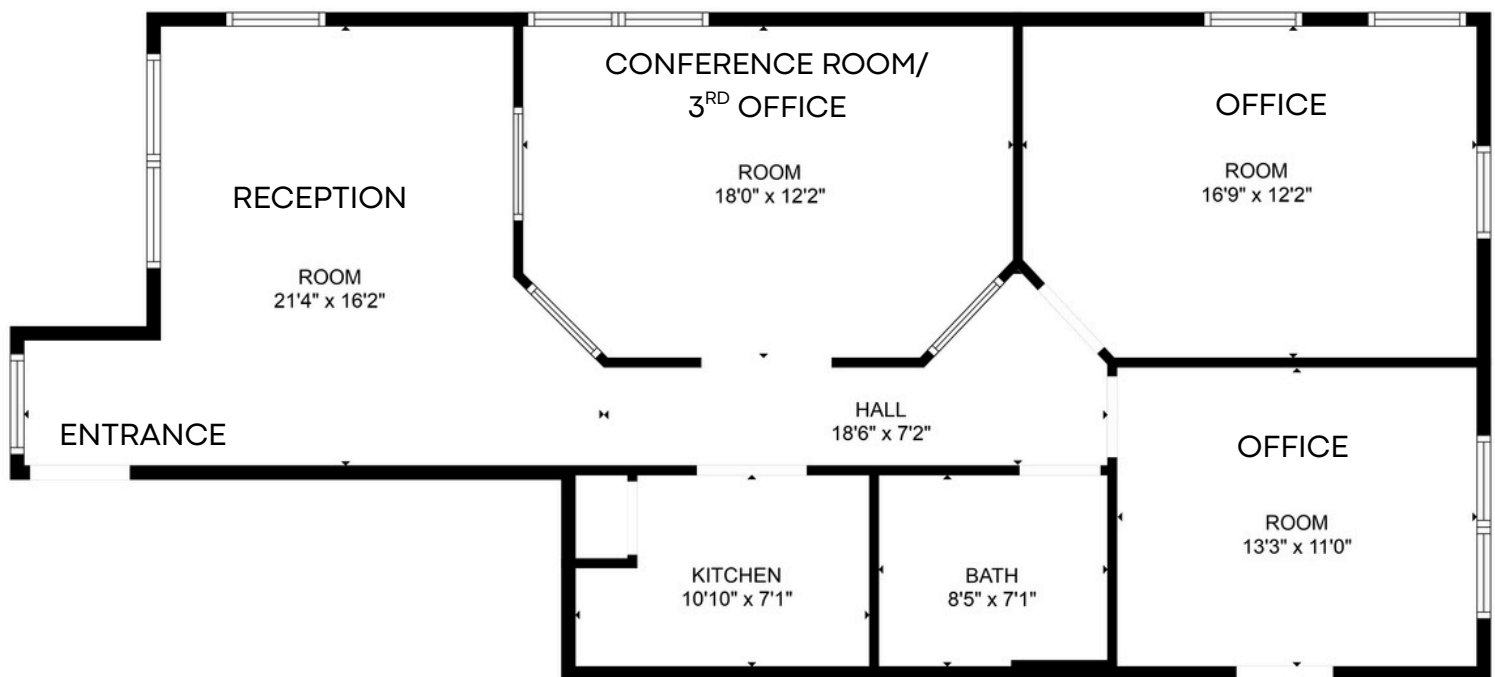
FLOORPLAN - Unit 110

1830 Peachtree Pky Cumming, GA. 3041

Presented by: Doug Sills
Associate Broker

📞 7770.781.5935 (office) 📞 678-923-5538 (cell)

✉️ Doug@BagleyCommercial.com



FLOOR PLAN CREATED BY CUBICASA APP. MEASUREMENTS DEEMED HIGHLY RELIABLE BUT NOT GUARANTEED.

ALL MEASUREMENTS ARE APPROXIMATE.

**All information believed accurate but not warranted. Tenant responsible for verification.*

www.BagleyCommercial.com

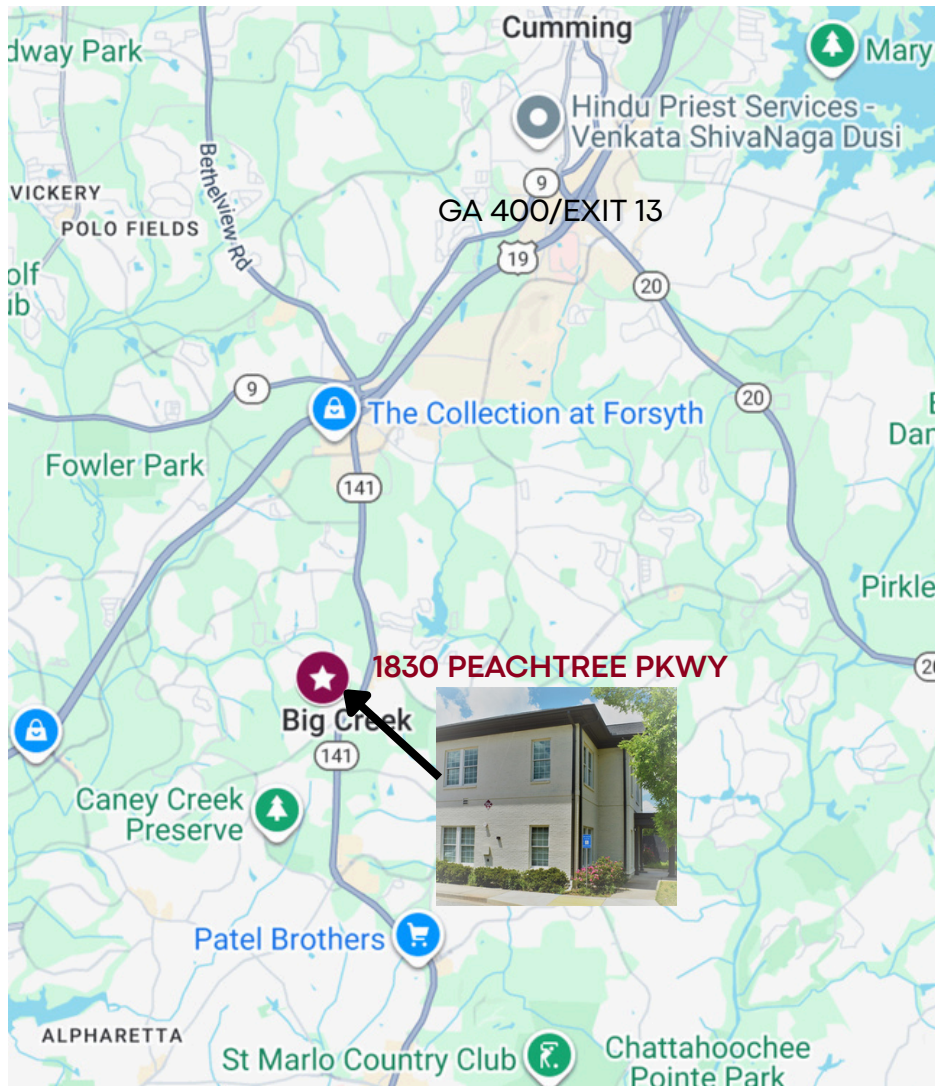


LOCATION MAP

1830 Peachtree Pkwy Suite 110 Cumming, GA. 30041

Presented by: Doug Sills
Associate Broker

 7770.781.5935 (office)  678-923-5538 (cell)
 Doug@BagleyCommercial.com



Disclaimer: The information included in this packet has been obtained from sources believed to be reliable. While Bagley Commercial Properties does not doubt its accuracy, we do not make any guarantee's, warranties, with regards to the included information. It is your responsibility to independently confirm its accuracy and completeness. References to square footage or age are approximate. You and your advisors should conduct a careful, independent investigation of the property to determine to your satisfaction the suitability of the property for your needs. The information contained in this packet is proprietary and confidential, and should not be distributed to any other potential Tenant without the consent of Bagley Commercial Properties.



About Bagley Commercial

With over 53 years of combined experience, Bagley Commercial Properties stands among North Georgia's elite real estate firms. The 400 North Board's Circle of Excellence and the title of Best in Forsyth County Commercial Real Estate for six consecutive years. Based in Cumming, the brokerage specializes in industrial, office, retail, land, and commercial transactions. They're known for assembling land parcels for residential and commercial builders, leasing, or selling to national and local clients alike.

Bagley Commercial prides itself on a foundation of integrity, transparency, and exceptional service—now backed by a proven track record and deep local market knowledge.

For questions, contact.




Doug Sills


Commercial Sales & Leasing Specialist | Associate Broker

Doug Sills, commercial real estate is about more than buildings and numbers—it's about people, vision, and creating opportunities that last. A Georgia resident for nearly three decades, Doug brings both local expertise and a client-centered approach to every transaction. His background in psychology and professional counseling gives him a unique ability to understand client goals deeply and guide them with clarity and confidence.

Presented by: Doug Sills

 Doug@BagleyCommercial.com

 7770.781.5935 (office)

 7770.781.5935 (direct)

 BagleyCommercial.com

Specializing in industrial, retail, investment properties, and land acquisition, Doug helps developers, investors, and business owners make smart, strategic decisions. Whether assembling parcels for a new project, matching landlords with long-term tenants, or guiding investors to high-yield opportunities, he combines data-driven insight with a personal commitment to his clients' success.

 info@bagleycommercial.com

 www.BagleyCommercial.com

104 Pilgrim Village Drive, Suite 400, Cumming, GA 30040

Disclaimer: The information included in this packet has been obtained from sources believed to be reliable. While Bagley Commercial Properties does not doubt its accuracy, we do not make any guarantees or warranties with regard to the included information. It is your responsibility to independently confirm its accuracy and completeness. References to square footage or age are approximate. You and your advisors should conduct a careful, independent investigation of the property to determine to your satisfaction the suitability of the property for your needs. The information contained in this packet is proprietary and confidential, and should not be distributed to any other potential Tenant without the consent of Bagley Commercial Properties.

www.BagleyCommercial.com