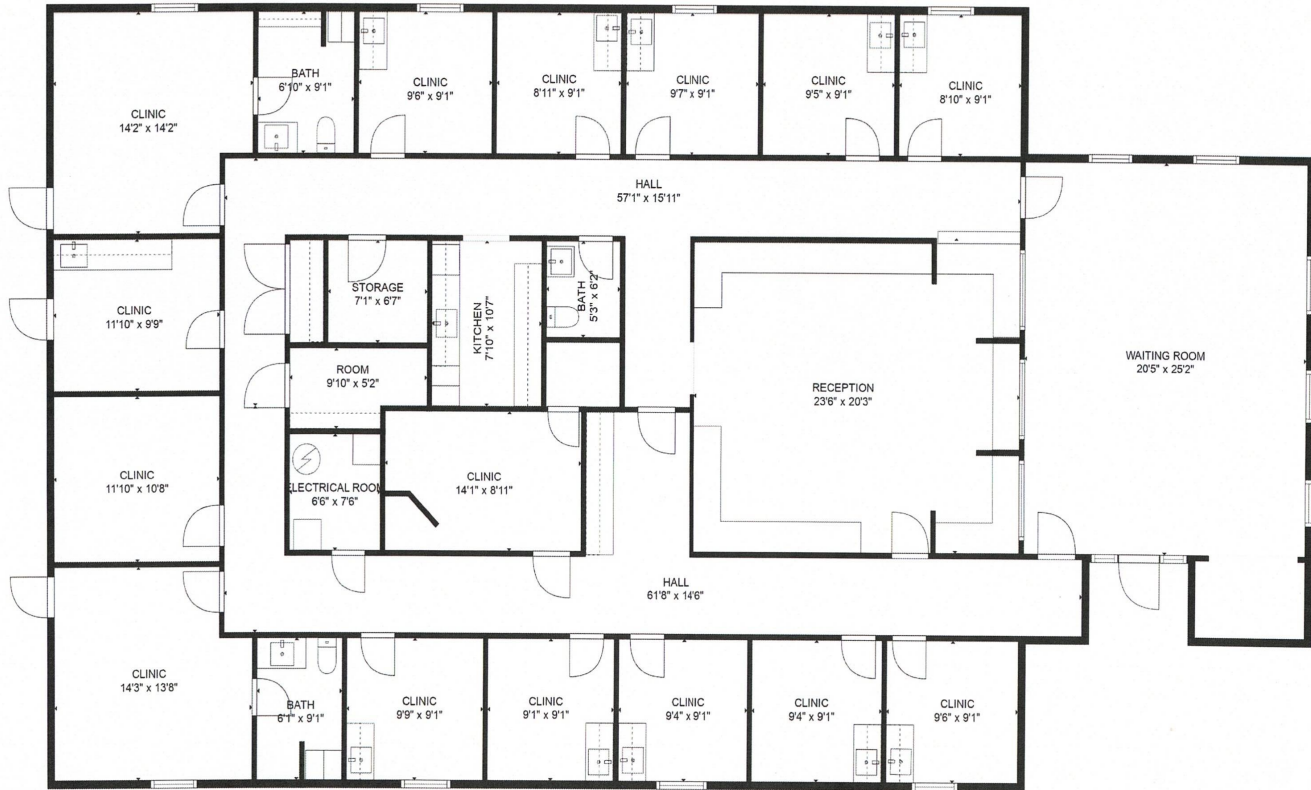


**303 PIRKLE FERRY RD**  
**FLOOR PLAN**



- |                                    |                           |                          |
|------------------------------------|---------------------------|--------------------------|
| <b>10 PATIENT ROOMS W/ SINKS</b>   | <b>3 PRIVTE OFFICES</b>   | <b>3 BATHROOMS</b>       |
| <b>LARGE WAITING ROOM</b>          | <b>STAFF WORK ROOM</b>    | <b>X RAY ROOM</b>        |
| <b>WASHER &amp; DRYER HOOK UPS</b> | <b>KITCHEN/BREAK ROOM</b> | <b>29 PARKING SPACES</b> |

**BAGLEY COMMERCIAL PROPERTIES**

Doug Sills, Associate Broker - 678-923-5538 (Cell) - DOUG@BAGLEYCOMMERCIAL.COM

ALL INFORMATION BELIEVED ACCURATE BUT NOT WARRANTED.

SQUARE FOOTAGE IS APPROXIMATE.