

0 100 200 300 400

SCALE: ONE INCH = 100 FEET

DATE: OCTOBER 5, 1987

THE FIELD DATA UPON WHICH THIS PLAT IS BASED HAS A CLOSURE PRECISION OF ONE FOOT IN 36,000 FEET AND AN ANGULAR ERROR OF 1" PER ANGLE POINT AND WAS ADJUSTED USING COMPASS RULE.

THIS PLAT HAS BEEN CALCULATED FOR CLOSURE AND IS FOUND TO BE ACCURATE WITHIN ONE FOOT IN 100,000 FEET.

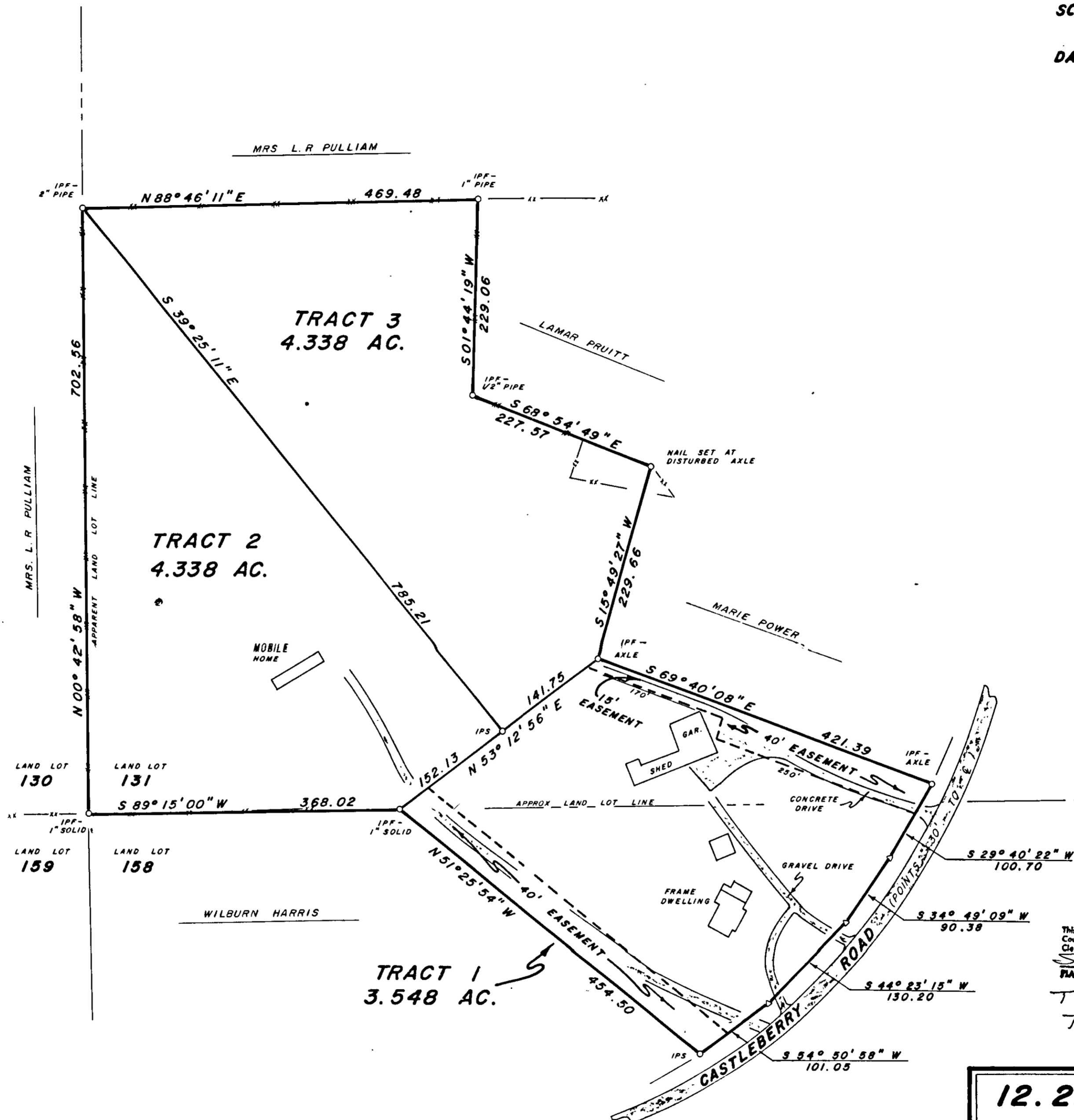
EQUIPMENT USED FOR MEASUREMENTS:
ANGULAR ET-1
LINEAR TOTAL STATION

FLOOD STATEMENT
THIS PROPERTY IS NOT LOCATED IN AN AREA HAVING SPECIAL FLOOD HAZARD CONDITIONS AS PER FLOOD INSURANCE MAPS.

NOTE - THIS PLAT OR SURVEY WAS MADE FOR THE SOLE USE OF THE PARTY OR PARTIES NAMED BELOW THE TITLE "SURVEY FOR". ANY THIRD PARTY USE OF THIS OR ANY PORTION OF THIS PLAT TO BE AT THEIR OWN RISK.

LEGEND

- IPS IRON PIN SET (1/2" RB)
- IPF IRON PIN FOUND
- R/W RIGHT OF WAY
- C CENTER LINE
- ▬ PROPERTY LINE
- ▭ CONCRET MONUMENT
- △ CALCULATED POINT
- INT. INTERSECTION



This plat of a Class I land subdivision meets all requirements of the Forsyth County Comprehensive Land Use Resolution and is entitled to recordation in the Clerk's Office, Forsyth County Superior Court.
Stewart Mills
PLAN DIRECTOR

TRACTS 1 AND 3 TO BE COMBINED

12.223 ACRES

SURVEY FOR
PAUL PRUITT

LOCATED IN: LAND LOTS 131 AND 158
2ND DISTRICT - 1ST SECTION
FORSYTH COUNTY, GEORGIA

Filed 18 Day Feb. 19 88 at 4:35 o'clock P.M.
Records 19 Feb. 19 88, Forsyth County, Ga. Clerk
Chg. Phill



SAVAGE AND ASSOCIATES
GAINESVILLE, GA. 536-8847
CUMMING, GA. 889-3963