

FOR LEASE

209 RIVER PARK NORTH DRIVE, WOODSTOCK GA. 30188



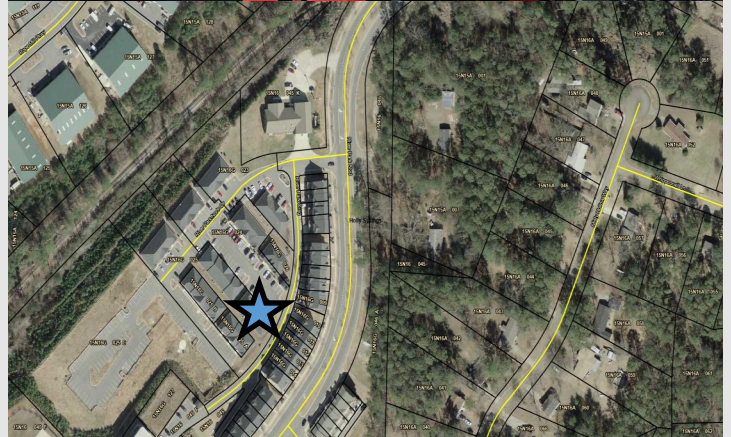
MONTHLY RENT RATE:

\$1663.00 + CAM

CAM: \$176.00 per month

DESCRIPTION:

- Ground Level Unit
- 1174 +- SF
- 5 offices, kitchen/break room, closet w/ work sink
- Luxury Vinyl Plank through out the space
- Updated paint
- Located in River Park North Office Park
- Approx. 1 mile from Hwy 575



BAGLEY COMMERCIAL PROPERTIES

Contact Associate Broker: Doug Sills

Cell: 678-923-5538

doug@bagleycommercial.com



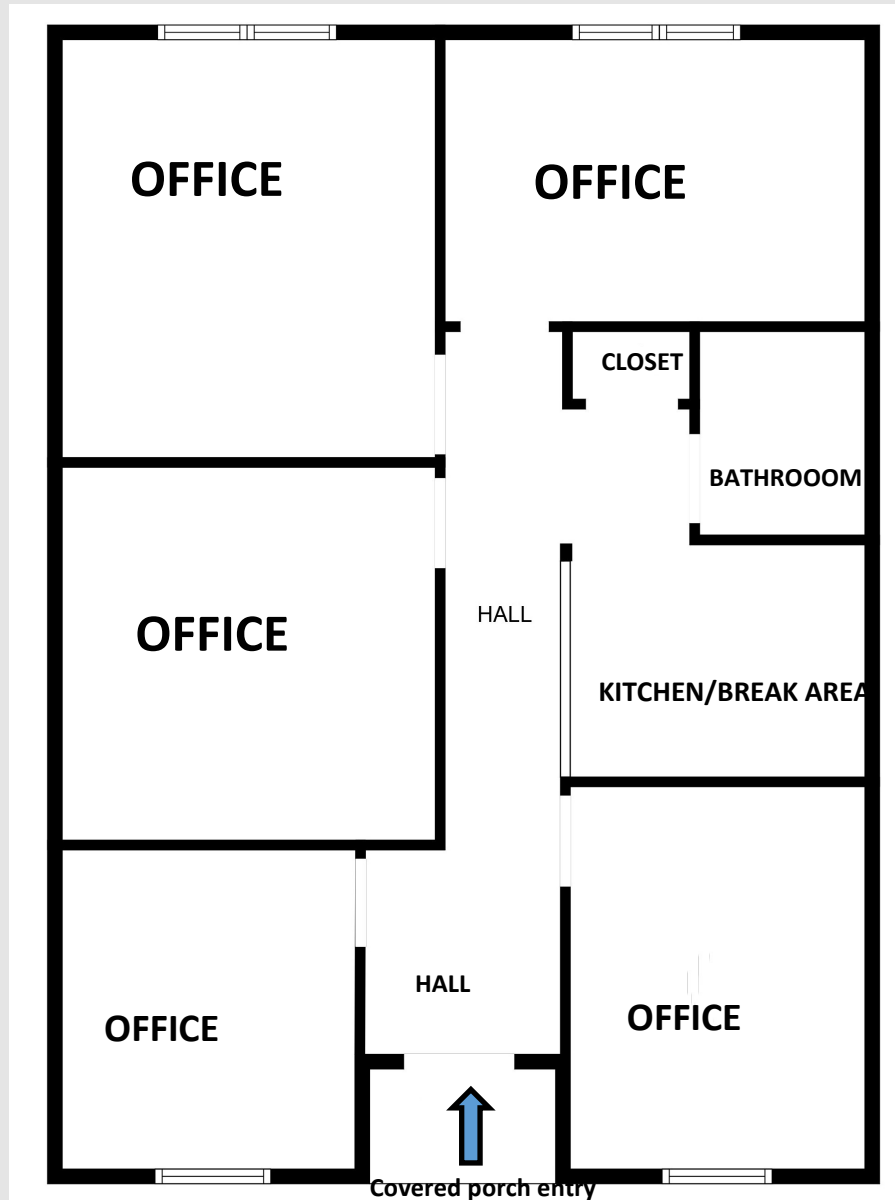
ALL INFORMATION CONTAINED HEREIN BELIEVED ACCURATE BUT NOT WARRANTED.

104 Pilgrim Village Drive Suite 400 - Cumming, Ga. 30040 - Office: (770) 781-5935 - www.bagleycommercial.com

FOR LEASE



FLOOR PLAN



BAGLEY COMMERCIAL PROPERTIES

Contact Associate Broker: Doug Sills

Cell: 678-923-5538

doug@bagleycommercial.com

ALL INFORMATION CONTAINED HEREIN BELIEVED ACCURATE BUT NOT WARRANTED.

104 Pilgrim Village Drive Suite 400 - Cumming, Ga. 30040 - Office: (770) 781-5935 - www.bagleycommercial.com

INTERIOR PHOTOS: 209 River Park North Dr.



BAGLEY COMMERCIAL PROPERTIES

Contact Associate Broker: Doug Sills

Cell: 678-923-5538

doug@bagleycommercial.com

ALL INFORMATION CONTAINED HEREIN BELIEVED ACCURATE BUT NOT WARRANTED.

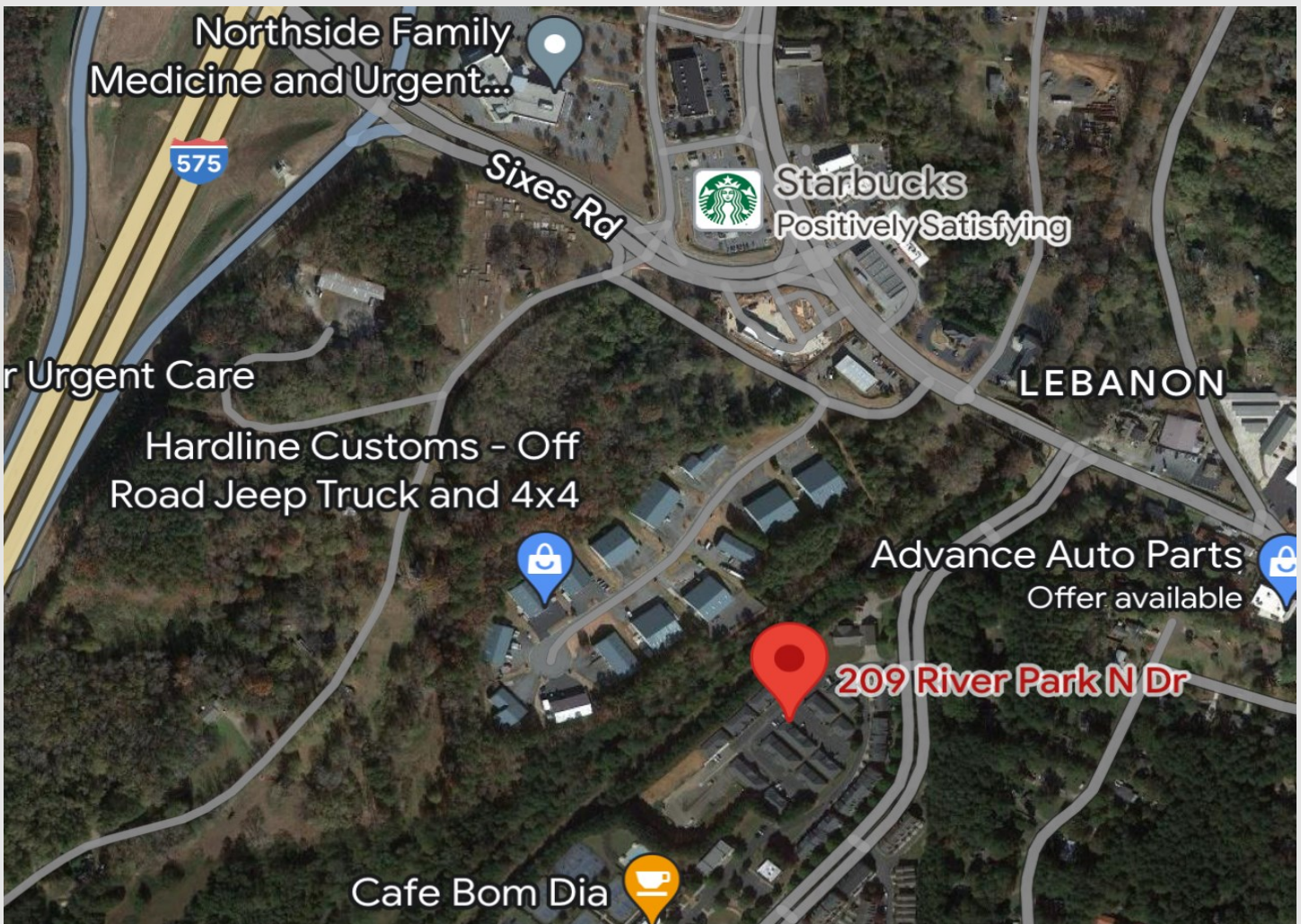
104 Pilgrim Village Drive Suite 400 Cumming, Ga. 30040. www.bagleycommercial.com. 770-781-5938

FOR LEASE

209 River Park North Drive Woodstock, GA. 30188



LOCATION MAP



BAGLEY COMMERCIAL PROPERTIES



104 Pilgrim Village Drive Suite 400 Cumming, Ga. 30040. www.bagleycommercial.com. 770-781-5938

All information believed to be accurate but not warranted.

FOR LEASE

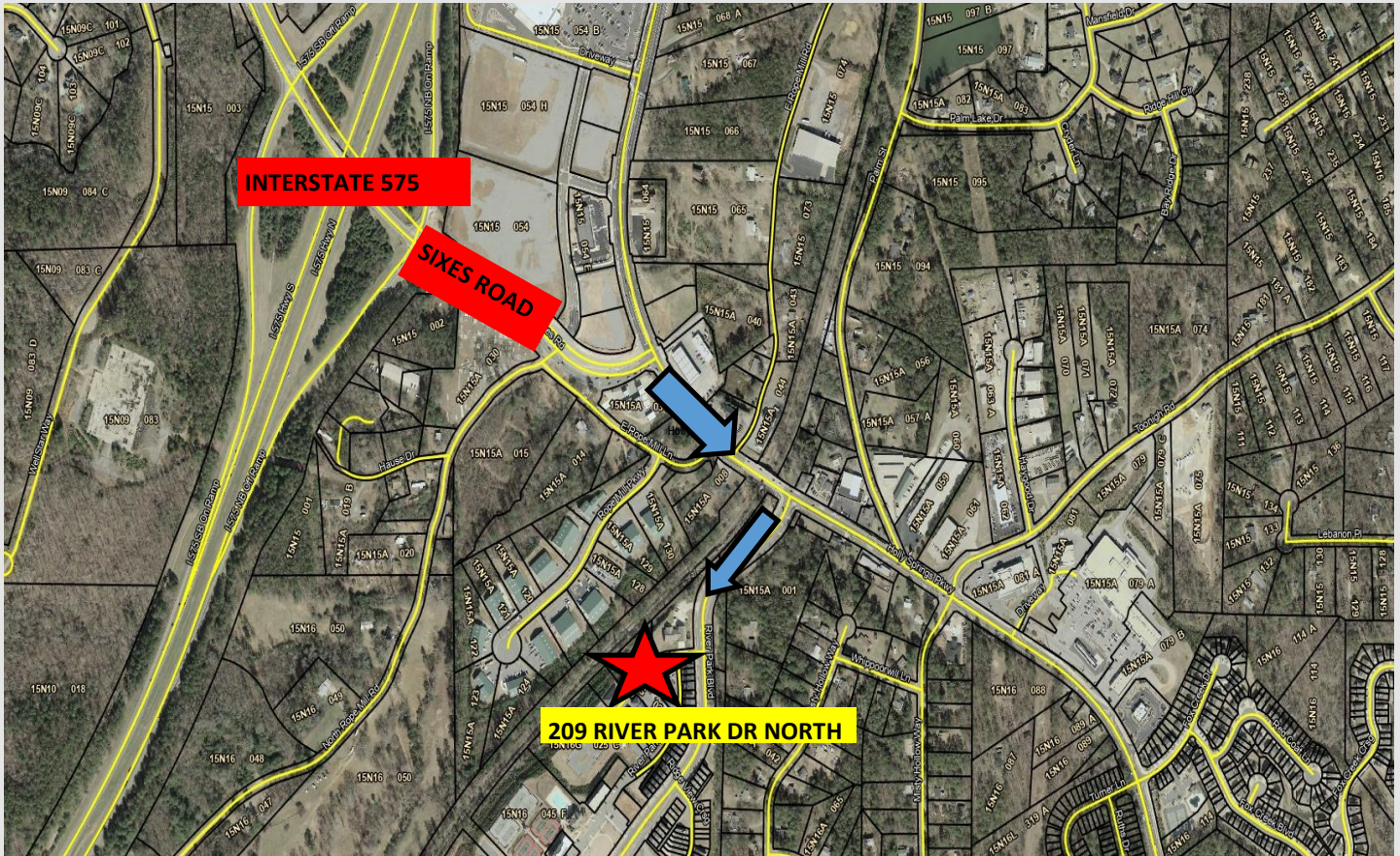
209 RIVER PARK DR. WOODSTOCK, GA. 30188

ASSOCIATE BROKER: DOUG SILLS : 678-923-5538

OFFICE: 770-781-5965



TAX MAP



Disclaimer: The information included in this packet has been obtained from sources believed to be reliable. While Bagley Commercial Properties does not doubt its accuracy, we do not make any guarantee's, warranties, with regards to the included information. It is your responsibility to independently confirm its accuracy and completeness. References to square footage or age are approximate. You and your advisors should conduct a careful, independent investigation of the property to determine to your satisfaction the suitability of the property for your needs. The information contained in this packet is proprietary and confidential, and should not be distributed to any other potential purchaser without the consent of Bagley Commercial Properties.